



2012 ANNUAL REPORT

(Fiscal Year July 1, 2011 - June 30, 2012)





TABLE OF CONTENT

01	BACKGROUND
02	STATISTICS
02	VOLUNTEERS
03	LEADERSHIP
04	BOARD OF DIRECTORS
05	STAFFING
06	PROGRAMS AND SERVICES
16	LOCATIONS
18	FINANCES
19	SUPPORTERS

BACKGROUND

The Asian Youth Center (AYC) was founded in 1989 by the Asian Task Force of the United Way of Greater Los Angeles, which had identified serious and unmet social service and health needs among Asian youth and families in the San Gabriel Valley. Today, AYC is an independent 501(c)(3) community-based non-profit organization (EIN 33-0383691) that has expanded its scope and services to serve both Asian and non-Asian youth and families in Los Angeles County California.

Our Mission is to meet the social service, health and educational needs of youth and families of all ages and ethnicities, with a focus on Asian immigrants.

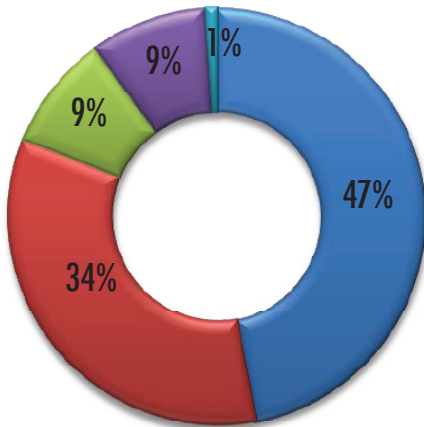
AYC's programs enable those we serve to adapt and contribute to a multi-cultural society. By providing culturally appropriate programs and services (in Mandarin, Cantonese, Vietnamese, Spanish, and English), AYC addresses the cultural and language-related barriers Asian and Hispanic youth and families experience when accessing educational, social, and health services.



Serving all Youth and Families

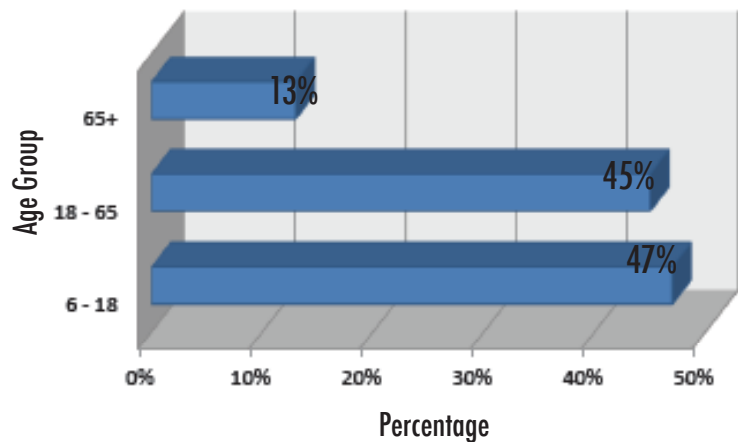
STATISTICS

AYC served 3,781 low-income, at-risk, and immigrant youth and their families with a variety of services. Approximately 95% of those served come from low-income families. Approximately 47% of those served identified as Asian Pacific Islander, 34% as Hispanic, 9% as African-American, 9% as Caucasian, and 1% other.



- Asian Pacific Islanders
- Hispanic
- African American
- Caucasian
- Others

Approximately 47% of the people served were under the age of 18 (youth services), 45% between the ages of 18-65 (parent services), and 13% 65 and older. The Senior Computer Lab served 502 unduplicated seniors.



VOLUNTEERS

In 2012, 124 volunteers contributed approximately 3,864 hours of time to support programs and services, administration and fundraising. Volunteers come to AYC to gain experience, participate in service learning for school and to complete community service hours. We would like to thank Career Partners, the EPIC Program at CSULA, and the Volunteer Center of San Gabriel Valley in Pasadena for referring volunteers to AYC.



Ben Tran received the 2012 Volunteer of the Year award at AYC's 23rd Anniversary Celebration and Awards Dinner on October 17, 2012. He is founder and CEO of Phuong Hang Inc., an import company specializing in international novelty foods and beverages. Ben is a 23 year resident of Rosemead, and he believes strongly in giving back to the community. As a student at Rosemead High School, Ben was a frequent visitor to Asian Youth Center (AYC) and he benefitted from its many programs. Ben now gives back to AYC by volunteering his time every weekend to help students who visit the center.

Ben is a first generation Asian American who understands the value of hard work and the importance of freedom and opportunity. Ben is married and has three daughters, Ashley, Alison and Madeleine. In his spare time, he likes to enjoy outdoor sports and spend time with his family and friends.

LEADERSHIP

AYC is led by a volunteer Board of Directors. The Board President, Gay Yuen is a Professor of Curriculum and Instruction, Bilingual and Literacy Faculty, Charter College of Education, California State University, Los Angeles. She has worked for over 35 years in the area of bilingual education. She was instrumental in developing statewide bilingual and ESL standards that guide the education and assessment of K-12 students and served for 3 years on a statewide taskforce that developed standards for bilingual teacher certification for California teachers.



The AYC Board Vice-President was Jones Moy completed a Bachelors degree in Criminal Justice and has 32 years of law enforcement service with the Monterey Park Police Department, with the last five years serving as the Police Chief. Jones retired from law enforcement in 2009. Currently, Jones is an investigator assigned out of Corporate Security with Southern California Edison and he is very active in the community.

The AYC Board Treasurer was Angela Chang graduated cum laude from George Washington University, majoring in International Affairs with a dual concentration in Asian Studies and Cross-Disciplinary Film & Media, and a double minor in Chinese Language & Literature and SocioCultural Anthropology. Upon graduating from GWU, Angela worked at White & Case LLP in New York City as an Antitrust, Intellectual Property, & Commercial Litigation Legal Assistant. She moved back to the Los Angeles area in July 2009 to become involved in KCAL Insurance Agency, her family's business. She has been involved in many local community service initiatives including Operation Warmth, a nonprofit project with the goal to provide the homeless population of Los Angeles & Orange Counties with a warmer winter. Operation Warmth provides those in need with blankets, coats, toiletries, and many other items.

AYC Board Secretary David Lawton is the Chief of Police of the City of San Gabriel, California since 1990. He has worked as a Patrol Officer, Field Training Officer, Investigator, Patrol Sergeant, Administrative Sergeant and Captain. Chief Lawton has a B.S. in Criminal Justice from California State University, Los Angeles, and a M.S. in Management from California State Polytechnic University, Pomona. He graduated from the California Commission on Peace Officer Standards and Training Command College and the Federal Bureau of Investigation Law Enforcement Executive Development Seminar (LEEDS).

BOARD OF DIRECTORS

President: Gay Yuen
Secretary: David Lawton

Vice President: Jones Moy
Treasurer: Angela Chang

Lily Baba
Administrative Analyst, Pat Brown Institute
California State University, Los Angeles

Sally Baldwin
Retired Teacher
San Gabriel Unified School District

Marissa Castro-Salvati
Region Manager, Public Affairs
Southern California Edison Company

Stephen Chan
President, G.E. Property Management, Inc.

Angela Chang
Chief Operating Officer
KCAL Insurance Agency

Jimmy Chu
Los Angeles Public Defenders Office

Daniel H. Deng
Attorney, Law Offices of Daniel H. Deng

Eileen Diamond
Chief Business Development Officer
San Gabriel Valley Medical Center

Tuan Do
Association Government Program Analyst
California Science Center

Erik Jiang
Director, Business Development & Managed Care,
Garfield Medical Center

Anna Jung
Community Consultant
Global Energy Services, Inc.

David Lawton
Chief, San Gabriel Police Department

K.T. Leung, CPA
Leung Accountancy Corporation

Hans Liang
Deputy Probation Officer
Los Angeles County Probation Department

Chin Ho Liao
President, Rotary Club of San Gabriel

Jones Moy
Former Chief, Monterey Park Police Department

Helen Romero Shaw
Public Affairs Manager
Southern California Gas Company

Jim Smith
Chief, Monterey Park Police Department

Ken K. Tcheng
Vice President & General Manager
Sunny Slope Water Company

Stanley M. Toy, Jr., MD
President & CEO, TEAM Healthcare, Inc.

Chun Fun (Jack) Yao
Deputy Probation Officer
L.A. County Probation Department
Asian Gang Unit

Stan Yonemoto
Yonemoto Physical Therapy Services, Inc.

Gay Q Yuen, Ph.D
Professor, Charter College of Education
California State University, Los Angeles

STAFFING



In February of 2012, AYC hired a new Executive Director, Michelle Freridge. She is responsible for the overall operations of the agency and reports to the Board of Directors. Ms. Freridge served in the U. S. Army Reserves while she completed her B.A. at Michigan State University. She received her Master's Degree in Public Administration from Western Michigan University in 1998, and moved to Southern California in 1999. Michelle has over 20 years of non-profit work experience with more than 12 years in management and leadership. For eight of those years she was the Director of Development and the Program Director at AYC. She completed her J.D. at Loyola Law School and passed the California Bar in 2011.



AYC created a new Director of Educational Enrichment Services position with funding support from the Ralph M. Parsons Foundation and hired Mai Taing in May of 2012. Ms. Taing completed her B.A. in Liberal Studies: Mathematics and Multiple Subject Credential at California State University Long Beach in 2003 and 2004 respectively. She completed a Master of Arts in Education: Curriculum and Instruction in 2009 at Concordia University in Irvine. Ms. Taing has 7 years of teaching experience in the public sector. In the first three months of her new position she has focused on classroom management training, selected and tailored academic curricula and outcome evaluations for grades 1-8 that are geared to the California Standards (CST).

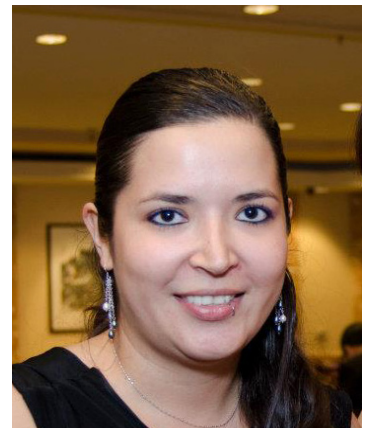


The Director of Youth & Family Services, Kwon Ho (Josh) Lee oversees all of the programs in the Youth & Family Services Department. He has more than 12 years of experience working with youth, including 8 years as a youth counselor, case worker and volunteer coordinator. He has more than 4 years of experience providing parent education as well. Mr. Lee also has over 5 years in management at AYC - first as the Program Coordinator of the Teen Leadership & College Career Preparation Program, then as the Program Manager for the Gang Intervention Program, and as an Assistant Program Director overseeing multiple programs. Mr. Lee graduated from Life Pacific College with a B.A. in Philosophy in 2007 and completed his M.A. in Organizational & Leadership Studies in 2013 at Azusa Pacific University.

AYC's Fiscal Manager, Mina Marie Ladlad, has more than 30 years experience in accounting, with 11 of those years in non-profit accounting including fiscal management of government contracts. Ms. Ladlad completed a B.S. in Business Administration with a major in accounting as well as Masters degree in business administration at the University of the East in the Philippines. She took a number of accounting classes at UCLA after immigrating to the U.S. to insure that her professional fiscal management and accounting skills she learned in the Philippines were in step with the Generally Accepted Accounting Principles used here in the U.S.



The Operations Manager, Aime Chambert is responsible for the overall office management including AYC office supplies, records keeping, facilities, equipment, vehicles, IT infrastructure, website, newsletters and other public relations materials and human resources administration. In addition, this position supervises reception in multiple buildings and provides overall support to the Executive Director for fundraising and board development. Ms. Chambert immigrated from Mexico City to the US after completing High School. She first started working with AYC in 2004 as a youth receptionist and gradually acquired and developed skills that resulted in her promotion to a full-time Administrative Assistant, then Executive Assistant and finally to Operations Manager. She completed a B.A. in art at California State University, Long Beach with a focus on Graphic Design in 2011. Ms. Chamber is fluent in Spanish and English.

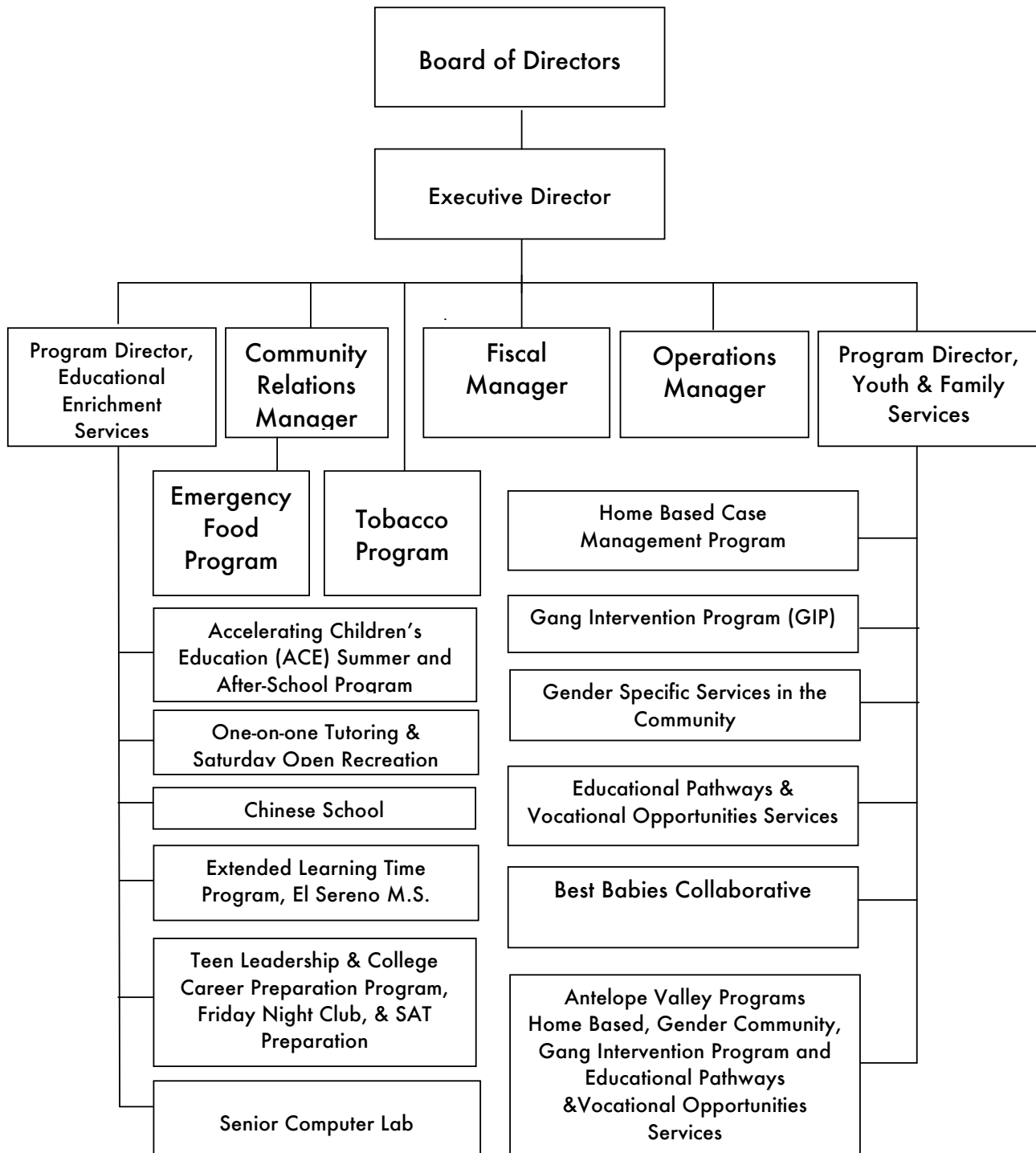


AYC employed 33 full-time and 14 part-time employees.



PROGRAMS AND SERVICES

ORGANIZATION CHART
2012



PROGRAMS AND SERVICES

EDUCATIONAL ENRICHMENT SERVICES DEPARTMENT

The Educational Enrichment Services Department includes after-school, summer and weekend educational enrichment, tutoring, youth development, college and career preparation, recreation and delinquency prevention programs for youth ages 6 – 18. In addition, AYC operates a Senior Computer Lab and Parent Education workshops and provides information, referral and translation assistance to community members as needed. These services are provided primarily out of our youth center facilities in the city of San Gabriel. Approximately 99% of the 865 youth, parents & seniors who received services through these programs identified as Asian Pacific Islander and approximately 92% are low-income.

ACCELERATING CHILDREN'S EDUCATION (ACE) After-school Program

The Accelerating Children's Education (ACE) Program consists of homework assistance and core California standard instruction in English Language Arts and Mathematics. The after-school program is offered Monday through Friday 2:30pm to 6:30pm. Students receive intervention and/or challenge work in English Language Arts and Mathematics, depending on academic level. The academic level of each student is individually determined through assessments when they start the program each year. Progress is determined through ongoing benchmarks throughout the school year and a post assessment at the end of the year. English language learners or students who are performing at below grade level can get caught-up to grade level because of the individualized assessments and academic intervention. Teachers are trained in classroom instruction and management and maintain a ratio of 14 students or less for each teacher. The ACE program also has a library exchange program with the San Gabriel Library. ACE offers enrichment activities as well such as: dance, theater, art and music. Students are also involved in educational field trips to enhance their learning experience. Finally AYC is able to provide transportation (on a first come first served limited basis) from school to AYC's May L To Educational Center each school day. This program is free to a limited number of low-income families and a sliding scale is used to determine fees for all other families.



ACCELERATING CHILDREN’S EDUCATION (ACE) Summer School Program

The ACE Summer School Program consists of all of the above AND instruction in science, social studies, history, crafts, nutrition and physical education. The ACE Summer School Program is offered to students starting in June when the school year ends and ending in August when the new school year begins. The program runs Monday – Friday, from 8:15am – 6:30pm. Students are also involved in educational field trips to enhance their learning experience. English language learners or students who are performing at below grade level can get caught-up to grade level because of the individualized assessments and academic intervention. A sliding scale based on income is used to determine fees for all families. Together, ACE After-School and Summer School Programs create well rounded students in academic, social and cultural skills.



ONE - ON - ONE TUTORING

The One-on-One Tutoring Program works in conjunction with ACE and TLCC programs. It offers personalized instruction in core curriculum subjects for students in K-12. The program is offered Monday through Friday by appointment. All tutors are college graduates and are matched based on their areas of expertise to the needs of each student. For example, youth needing higher level math tutoring are matched with a tutor who has experience and excellence in higher level math. Students are assessed to determine accurate grade levels of understanding and performance and they are then given appropriate instruction to help them to reach their academic goals. A sliding scale based on income is used to determine fees for all families.

SATURDAY HOMEWORK ASSISTANCE

The Saturday Homework Assistance Program is a partner program with the One-on-One Tutoring Program. The Saturday Homework Assistance Program also works in conjunction with ACE and TLCC programs. It offers personalized instruction in core curriculum subjects or be completely homework assistance, if that is the need of the individual student. The program is offered Saturday mornings 9:00am – 1:00pm on a reservation basis, and on Saturday afternoons from 1pm – 6pm along with open recreation. A sliding scale based on income is used to determine fees for all families.

CHINESE LANGUAGE SCHOOL

The Chinese Language School Program is offered on Saturday mornings, 9:30am – 12:30pm. It is a language acquisition program that consists of speaking, understanding, reading and writing instruction in Chinese (Mandarin-Simplified). Students are broken up into three levels: beginner, intermediate, and advanced. Teachers are trained in classroom instruction and management. They teach from a Chinese Language Acquisition Curriculum that is designed for K-8 students. A sliding scale based on income is used to determine fees for all families.

EXTENDED LEARNING TIME (ELT)

Extended Learning Time (ELT) is a satellite program that mirrors the ACE After-School Program. It serves students from low-income families with at-risk academic status at El Sereno Middle School. ELT consists of homework assistance and core California standard instruction in English Language Arts and Mathematics. The program is offered each afternoon, Monday through Thursday 2:30pm – 6:30pm. Students receive intervention work in English Language Arts and Mathematics, depending on academic level. Academic level is obtained through pre and post examinations and ongoing benchmarks throughout the school year. Teachers are trained in classroom instruction and management. The end goal for ELT is to help students attain grade-level proficiency in core curriculum to better prepare them for a successful academic experience. This program is funded through the United Way of Greater Los Angeles and no fees are charged to participating families.



TEEN LEADERSHIP & COLLEGE/CAREER PREPARATION (TLCC)

The Teen Leadership & College/Career Preparation Program (TLCC) is an after-school program geared for low-income, at-risk high school students in the community. It is offered on weekday afternoons from 2:30pm-6:30pm. It consists of homework assistance and group tutoring for the majority of the afternoon. Students are also instructed in life skills such as: job preparation, college application assistance, financial aid and scholarship application assistance. Students are given community service opportunities. They also attend workshops on subjects such as: leadership, resume skills, and post-high school preparation. Students are also involved in educational field trips to enhance their learning experience. The purpose of TLCC is to prepare high school students for a successful transition into young adulthood as well-rounded, productive members of society. This program is funded through the Dwight Stuart Youth Fund and no fees are charged to participating families.

SAT PREPARATION

The SAT Preparation Program is designed for low-income students in the community that have the goal of college or university acceptance. These students are in need of SAT study and test-taking skills and AYC's SAT Preparation Program addresses this need in the community. It is administered four times a year, for eight weeks in a row, on Saturdays from 9:00am – 6:00pm. The instructors are college graduates with advanced training in curriculum instruction and test-taking strategies. The program covers all parts of the SAT. It gives students detailed instruction and test-taking tips for each portion. The idea of the SAT Preparation Program is to help students, who otherwise could not afford such assistance, to be successful on their SAT's, which in turn prepares them for a successful college or university experience. A sliding scale based on income is used to determine fees for all families.



FRIDAY NIGHT CLUB

The Friday Night Club (FNC) runs hand in hand with the TLCC Program. It is a safe-haven program for low-income, at-risk youth in the community ages 14-24. It is offered as a refuge on Friday evenings 6:00pm-9:00pm to high school students in the community. Students are able to participate in Open Recreation which can be anything from card games and board games to use of the pool table or sports in the gymnasium. FNC also has a Basketball League who play basketball in the gym in preparation for competitive games in the community. Like TLCC, FNC students participate in life skills workshops such as: healthy relationships, tobacco and drug awareness, drivers and safe sex education. Students are also involved in educational field trips and community service opportunities. The purpose of FNC is to aid prevent youth delinquency and gang involvement while giving these students a safe-haven where they can develop social skills, team work skills, and enjoy pro-social recreation.



SENIOR COMPUTER LAB

The Senior Computer Lab Program is offered Monday - Friday from 10:00am - 12:00pm. It is available for free to all seniors in the community who wish to learn how to use their home computers or laptops. They are given instruction in English, Chinese, and Vietnamese in basic computer skills such as: Word, Internet, Email, and interactive media. Seniors are given access to up-to-date computer software and media. They learn essential skills for computer literacy.



YOUTH AND FAMILY SERVICES DEPARTMENT

The Youth & Family Services Department includes social service programs provided out in the community at school sites, community partner sites (such as churches or YMCA's) and in clients homes. These services are provided through-out the first and fifth supervisorial districts of Los Angeles County including the Antelope Valley, Eastern San Fernando Valley, East Los Angeles, Huntington Park, San Gabriel Valley and Pomona areas. These services are for at-risk, probation, and adjudicated (re-entry from incarceration) youth referred from the Los Angeles County Probation Department. The population is composed of Asian Pacific Islander, Hispanic, African-American, Caucasian, and other ethnic groups. However, about 99% of the 1,804 youth and families served by these programs are low-income.

GENDER SPECIFIC SERVICES IN THE COMMUNITY

Better Outcomes with New Connections & Enrichment for Girls (BOWNCE)

The goal of AYC's BOWNCE program is to promote healthy female adolescent development by instilling positive self-image, decision making, and interpersonal skills for female youth identified as at-risk of juvenile delinquency. Program participants engage in weekly group discussions and activities addressing topics as Self-Esteem, Healthy Relationships, Physical Development, Conflict Resolution, College/Career Planning, and Decision Making. In addition to the activity/discussion sessions, participants also attend field trips focusing on themes of education, cultural awareness, and mother-daughter relationship building. Successful delivery of these services will effectively strengthen the family unit, promote responsible youth behavior, and decrease recidivism.

GANG INTERVENTION PROGRAM (GIP)

The goals of AYC's Gang Intervention Program are to promote healthy adolescent development and decrease delinquency, criminal behavior, and gang involvement. Designed for at-risk, gang associated youth and their parents, program participants engage in weekly discussion groups that focus on developing healthy cognitive-behavioral skills. Topics addressed during the sessions include Decision Making, Choices and Consequences, Anger Management, Substance Abuse Prevention, and Recognizing Thinking Errors as Minimizing, Self-Centeredness, and False Blaming. The parent component of the program focuses on empowering parents with effective Communication, Discipline, and Household Structuring skills. Successful delivery of these services will effectively strengthen the family unit, promote responsible youth behavior, and decrease recidivism.

HIGH RISK/HIGH NEEDS HOME BASED PROGRAM

The goals of AYC's High Risk/High Needs Home Based Program are to decrease criminal and delinquency behavior and to promote school success for high-risk probation youth. Designed for probation youth and their parents, the program's Case Workers visit each family in their homes to provide support and guidance in empowering the youth to successfully complete the terms of his or her probation. During these weekly visits, Case Workers engage the minors in curriculum based discussions regarding Decision Making, Choices and Consequences, Anger Management, Substance Abuse Prevention, and Recognizing Thinking Errors as Minimizing, Self-Centeredness, and False Blaming. The parents are engaged in informational discussions that focus on developing effective Communication, Discipline, and Household Structuring skills. Successful delivery of these services will effectively strengthen the family unit, promote responsible youth behavior, and decrease recidivism.

EDUCATIONAL PATHWAYS AND VOCATIONAL OPPORTUNITIES (EPVO) PROGRAM

AYC's Educational Pathways & Vocational Opportunities (EPVO) Program aims to reduce juvenile delinquency and recidivism by providing case management services to probation youth in acquiring their high school diploma or G.E.D., essential job readiness skills, and specific vocational training. Designed for probation youth that have been recently released from camp or detention center, participants receive assistance in education and career goal setting, enrolling in vocational training or other post-high school educational programs, and long term retention and support services. Program participants also receive a stipend to afford school fees and purchase necessary items related to his or her educational and/or career success.

EMERGENCY FOOD PROGRAM

AYC has been providing emergency food for hungry families for more than nine years through partnerships with the LA Regional Food bank and other community partners. In the most recent year, however, because of shortages at the food bank, we have had to begin doing local quarterly food drives and developing partnerships with manufacturers and distributors to donate goods. Last fiscal year more than 400 families received emergency food. In order to provide more adequate food security services to Asian Pacific Islander families, AYC requested and received support from the APCF Board of Directors & Friends Giving Circle Grant in order to procure, process, and distribute more ethnically appropriate foods geared toward APIs. The funds were utilized to establish partnerships with various Asian food manufacturers, distributors, and retail vendors to increase donations of typical Asian foods and to work in partnership with local businesses to conduct food drives. In addition, AYC recruited and train volunteers to carry out the collection, packing, and distribution process.



HEALTH AND POLICY SERVICES DEPARTMENT

The Health & Policy Department of AYC are where programs and services that provide education and outreach to the community on specific health and/r policy topics are grouped. Past health and policy programs have included Breast Cancer Prevention Education, Poison Fish Education, and HIV Prevention Education.

TOBACCO CONTROL SMOKE FREE AREAS

This program provides community education and outreach regarding the health hazards of second hand smoke. Last fiscal year this program reached out to 497 individuals in local communities and conducted outreach to untold thousands more through media and public events.



BEST BABY COLLABORATIVE

This collaborative was funded by the Los Angeles County First Five and is a partnership of a number of local health and human services non-profits. AYC's case worker provided peri-natal education and support to high-risk Chinese speaking pregnant and parenting women. The goal of this program is reduce fetal and infant death and disease and improve fetal and infant health. This B.A. level case worker served 14 families last fiscal year.

LOCATIONS

Our main administrative office is the Tawa Youth Center in San Gabriel. This facility, located at 100 West Clary Avenue San Gabriel CA 91776, houses Educational Enrichment Services for high-school aged youth: The Teen Leadership and College/ Career Preparation Program, SAT Preparation, and the Friday Night Club. The building has a large open recreation area with ping pong, billiards and fooseball tables; a gymnasium with a half basketball court; a DJ/Recording Studio; a computer lab; a classroom; a conference room; and administrative offices.



The May L. To Educational Center located just down the street at 232 West Clary Avenue, San Gabriel CA 91776, houses the After-School, Summer School, and other programs for children ages 6-14. In addition, it has administrative offices.



LOCATIONS

AYC has multiple satellite offices for staff providing services in the geographic region. These are administrative offices and no services are provided on site. Instead the services are provided out in the community in clients homes, at schools, or other community locations. The East Los Angeles office is co-located with the Cypress Park Family Source Center at 929 Cypress Avenue, Los Angeles, CA 90065.

AYC's Antelope Valley Office is located at 43423 Division Street, Lancaster CA 93535. This office houses The Antelope Valley Program Manager and three Case Workers for the High-Risk High Needs and Gender Specific Home Based Programs.

AYC's Pomona Office is located at 401 N. Gibbs St., Room 302, Pomona CA 91767. This office is used by the High-Risk High Needs and Gender Specific Home Based Programs serving the West San Gabriel Valley area of the County.

AYC's Huntington Park Office is co-located with the Hub Cities Consortium at 2677 Zoe Avenue, Huntington Park, CA, 90255, to provide office space, counseling rooms, meeting rooms, and classrooms for the Educational Pathways & Vocational Opportunity (EPVO) Services and Gang Intervention Program.

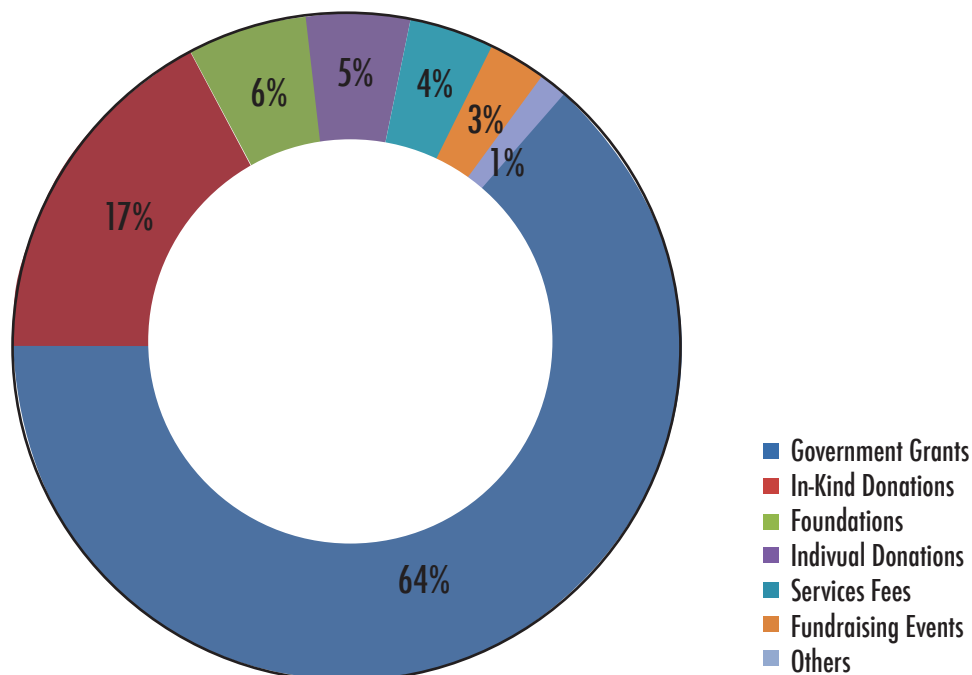
FINANCES

AYC closed 2012 with total liabilities and net assets of \$2,023,732. This is an increase of \$218,065 from the prior year mostly due to changes in accounting procedures related to in-kind donations and depreciation.

Revenue and support for the year was \$2,452, 898, while expenses were \$2,359,180 creating a surplus of \$61,191. This is an increase from the prior year when revenue was \$2,045,322 and expenses were 2,020,754 which left a surplus of \$24,568.

AYC's Audited Financial Statements and Internal Revenue Service annual 990 forms are public record and are available at Guidestar.com, www.asianyouthcenter.org or upon request.

AYC receives major support in the form of contracts and grants from the Federal Government and Los Angeles County as well as foundations, corporations, community groups, and collaborative partners. AYC receives support from the United Way of greater Los Angeles and the Asian Pacific Community Fund. AYC's individual donors and fundraising events provide additional support each year.



AYC is committed to sustaining its much-needed programs and services, and developing new services to meet the emerging needs of the communities we serve, through a well-managed diverse portfolio of funding strategies and sources.

SUPPORTERS

\$10,000+



\$5,000 - \$9,999



Asian Pacific Community Fund
Daniel H. Deng
Fu-Shun Chen
Gay Yuen

Hilton Los Angeles/San Gabriel Hotel
Lanni Wong
State Farm Insurance Company
South California Gas Company



Helen Romero Shaw, Southern California Gas Company Public Affairs Manager presents a check to support Asian Youth Center. Left to Right: Daniel Deng, Past Board President; Michelle Freridge, Executive Director, Helen Romero Shaw, Gay Yuen, Board President and David Lawton, Board Secretary.



Michelle Freridge, Executive Director received a \$5,000 check from Asian Pacific Community Fund to support AYC's Food Emergency Program

SUPPORTERS

\$1,000 - \$4,999

Alex To and Family
Athens Services
Bank of America United Way Campaign
Bestfit International, Inc
Center for Chinese Medicine
East West Bank
Evan Philip Freed
Garfield Medical Center
Health Net of California, Inc
Heights Insurance Group, Inc
Jones and Joyce Moy
Ken K. Tcheng
Law Office of R.D. Cornforth
Luke and Helen Hung

Network Medical Management Inc.
OneLegacy
Pacific Independent Physician Association
Project By Project Incorporated
Rayford Fountain
San Gabriel Superstore
San Gabriel Valley Medical Center
Stan Yonemoto
Stanley M. Toy, Jr. M.D.
Southern California Edison Company
Tina Yang, MD
United Way California Capital Region
Warner Pacific Insurance Services
World Light Foundation



JT Kim, Project by Project President presents a check to Michelle Freridge to support AYC general operations and programs.



Thank you State Farm Insurance for sponsoring AYC's 2011 3-on-3 Basketball Tournament

SUPPORTERS

\$500 - \$999

Anna H T Wu-Williams
Anthony Wong
Asian Pacific Probation Association
B-K Alhambra Property LLC
Chin-Ho Liao
Christiane Elhabr
Eleanor Wu
FCE Benefit Administrators, Inc
Good Search
Linda T. Sanchez
L.F.A. Insurance Services, Inc

Monterey Park Police Officers Association
Mark M. Mayeda
Pedro Chan
Philip C. Chinn
Raymond and Rebecca Che
Raymond Wu, O.D.
Suellen Cheng Kwok
Ted Chen
The Gold Refinery
U.S. Bankcard Service, Inc.
Victor Marfoe
Wong Ley, Inc.

\$1 - \$499

Allen Lee
Alpine Electronic of America, Inc
Amanda Ma
Amy Von
Anna Jung

Austin Yang
Bernard R. Smith
Betty Tsang
Bianca Bisi
Brenda Yen



AYC thanks Cathay Pacific Airlines for supporting our 2012 Community Service day. Staff and volunteers repainted our gym.



AYC's 22nd Anniversary Celebration and Awards Dinner Awardees: Joyce Shimazu, LA 18; Annie May, Kiehl's Since 1851; Johnna Cho, Network for Asian Pacific Americans; and Kenny Chang, KCAL Insurance Company.

SUPPORTERS

\$1 - \$499

Celine Liao	Jamba Juice	Neighborhood Legal Services of LA
Cindy Robles	Jennifer T. Tang-Nim	Omar Nurimansyah
Chui Hing Ha	Jill M. Soto	Organization of Chinese American
Carolyn E. Laase-Richie	Johnson Fu	Pacific Engineers Group
City of Alhambra	Josh Lee	Peter Au
D.H. Wong	Joseph Wu	Poon Consulting
Diane H. Tom	Joshua Chen	Rose Gregorian
Dorothy H. Camashiro	Joyce W Hsin	Sally Baldwin
Dr. Gary D. McGuigan	Julia Y Chen	S&S Worldwide, Inc.
Eastside Optimist Club	Kaivan Yuen	San Gabriel Business Expo
Edna Castro	Khai H. Nguyen	San Gabriel Unified School District
Elaine Fujii	Leslie Crunelle	Sergio Aguilar
Elina Wong	Liberty Mutual Group Inc.	Sharron L. Heinrich
Emily Kwan	Lily Lee	Shun-Ren Randy Lin
Erion Wu	Linda S. Wah	Susan Kujawa
Eddie C. Pearson	Lindsey Ly	The J. Morey Company
Francois Polifroni	Luanna Hui	Therese G. Brummel
Frederick L. Uy	Luci Chun	Timothy A Cheadle
Glen Ishii	Marv Stevens	Tri-star Vending
Gordon Yu	Mary M. Ling	Wells Fargo Community Support
Henh Nam Ho	Michelle Freridge	Campaign
Helen Hung	Mina Ladlad	William Chun-Hoon
Helen Ma	Mindy Wong	Wing Lai
Helen Romero Shaw	Mitchell S. Ing	Xin Y Liu

Thank you for your generous contribution that helps us provide our service to children, youth and families. You have our deepest appreciation for your thoughtfulness!







www.asianyouthcenter.org
www.facebook.com/AYC100